



ONE STANDARD

WAR 2022



2022 OPPONENT STADIUM LOCATIONS - FIELD / PRESS BOX CREDENTIALS

Visiting Patrons: (Gates Open at 5:30 PM)

The Visiting Patrons will occupy the East stands. (Students North / General Admission Center / Band South)

Football Team– The Opponent Varsity Football Team will depart their team bus in front of the east Visitor Ticket window. Stadium Manager (Eddie Bell) will direct you to your locker rooms upon arrival (LHS Boys-Girls Soccer Locker Rooms). The Football Team & Coaching Staff will enter & exit the field from the southwest Soccer Locker Rooms. There will be a tarp laid across the track, so please have your team stay on the tarp and off the track with their cleats. The Visiting Tunnel Crew will set their blowup on the southeast side of Leopard Stadium.

Officials – Coach Kyle Herrema will direct Officials to their Locker Room (located in the south end fieldhouse – Officials Room).

Band, Drill Team, Cheer South End: The Visiting Band & Drill Team will occupy South Visitor Stands.

Visiting Student North Stands: The Visiting Students will occupy North Section of Stands.

**** SUPPORT STAFF ****– The school support staff will have to have proper identification credentials to enter the field area (LISD Field Pass or **Opponents School Identification Badge**). There will be a gate officers checking proper credentials. **X** Opponents can scan their identification credentials to the LISD Athletic Department (469-742-8025 – fax) for review. **** (Team members and support staff in uniform will not have to provide credentials) ****

Press Box Pass Credentials (Capacity Limits) – All school personnel must have proper Press Box credentials for admittance to the press box. If your coaches plan to attend a game at Leopard Stadium to scout, please have them contact the Athletic Office (469-742-8068) to be placed on the Scout Press Box List.

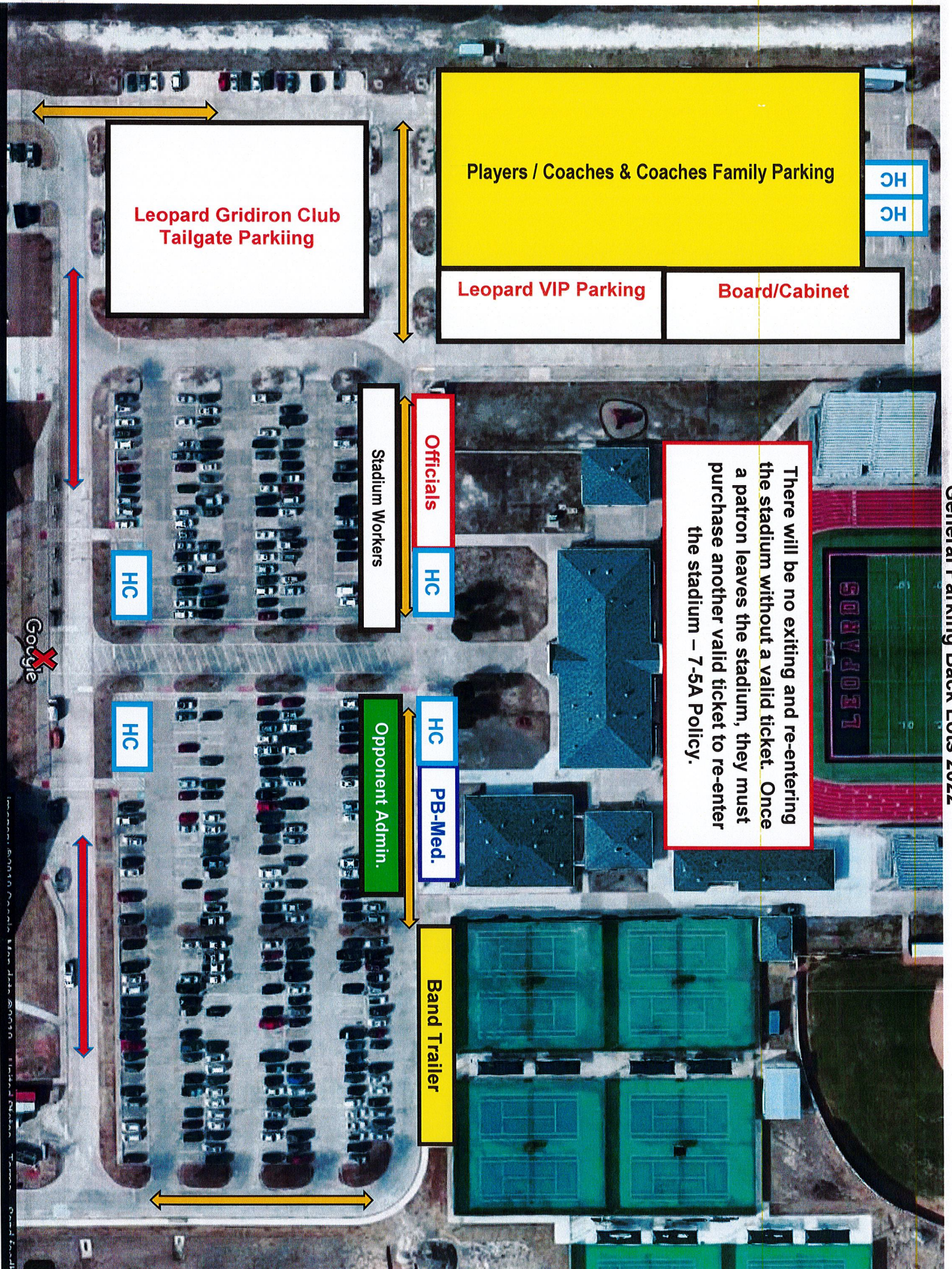
**** Lovejoy ISD requires proper credentials for press box**** **District 7-5A Policy requires two scouts that are scheduled to play Lovejoy and/or Lovejoy's opponent to be the only scouts allowed in the press box area.** Call Lovejoy Athletic Office (469-742-8068) for proper Press Box credentials by **Wednesday** each week. Check in with Press Box monitor at the base near the elevator entrance to gain access. Scouts will be located on Level 1 and Team Coaches will be on Level 2 (South Coaching Booth).

**** There is no exiting and re-entering the stadium. Once you leave the stadium, you will need to purchase another game ticket to re-enter the stadium. – District 7-5A Policy****

X **LISD School Marshals (SM)** – These school officers will assist LISD with crowd control. Contact an officer if you are experiencing any issues. **X** **On Duty Police Officers** – The officers are monitoring the south field gates. All patrons must have proper credentials to enter the field. (Field Pass / Administrative Badge / All Access Pass). **C – Stadium Concessions & Restrooms.**

Casey Littlefield is the Lead Marshal for Lovejoy ISD Security and will be in charge of all gameday security. Prior to each game, the Lovejoy ISD Administrative & Security Team will meet in the Track Coaches Office (H106) to review and discuss gameday procedures (6:30 PM).

General Parking Back Lots 2022



General Parking Back Lots 2022

X Parents Student Drop Off - Pick up Location. North end of the LHS Courtyard. Students will no longer be allowed to be dropped off in front of the fieldhouse due to the Lovejoy ISD Shuttle bus traffic.

All Parking is General Parking (First Come – First Served).

 Red Arrows indicate traffic flow for the parent drop off & pickup of their student(s) located by the courtyard circle area. Normal traffic pattern (Stay Right).

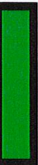
 Yellow Arrows indicate the Lovejoy ISD Shuttle Service. This area needs to be clear at all times to allow the buses to drop off and pick up stadium patrons at the front sidewalk of the Fieldhouse.

Player, Coach, Family - will park in the designated areas located on the Back Parking Map.

Opponent Band Trailer – Park in the area in front of the Tennis Courts. This location will allow the band to unload/load their instruments and equipment when needed.

 Stadium Workers

Stadium workers Parking Area.



Opponent Administration / Trainers / Team Physicians.

 Officials

Game Officials Parking Area

 PB-Med.

Press Box Crew & LHS Medical Staff

 HC

Handicapped Parking

 LISD Board & Cabinet

LISD School Board & Cabinet



Coaches Family

 Gridiron Club VIP Parking

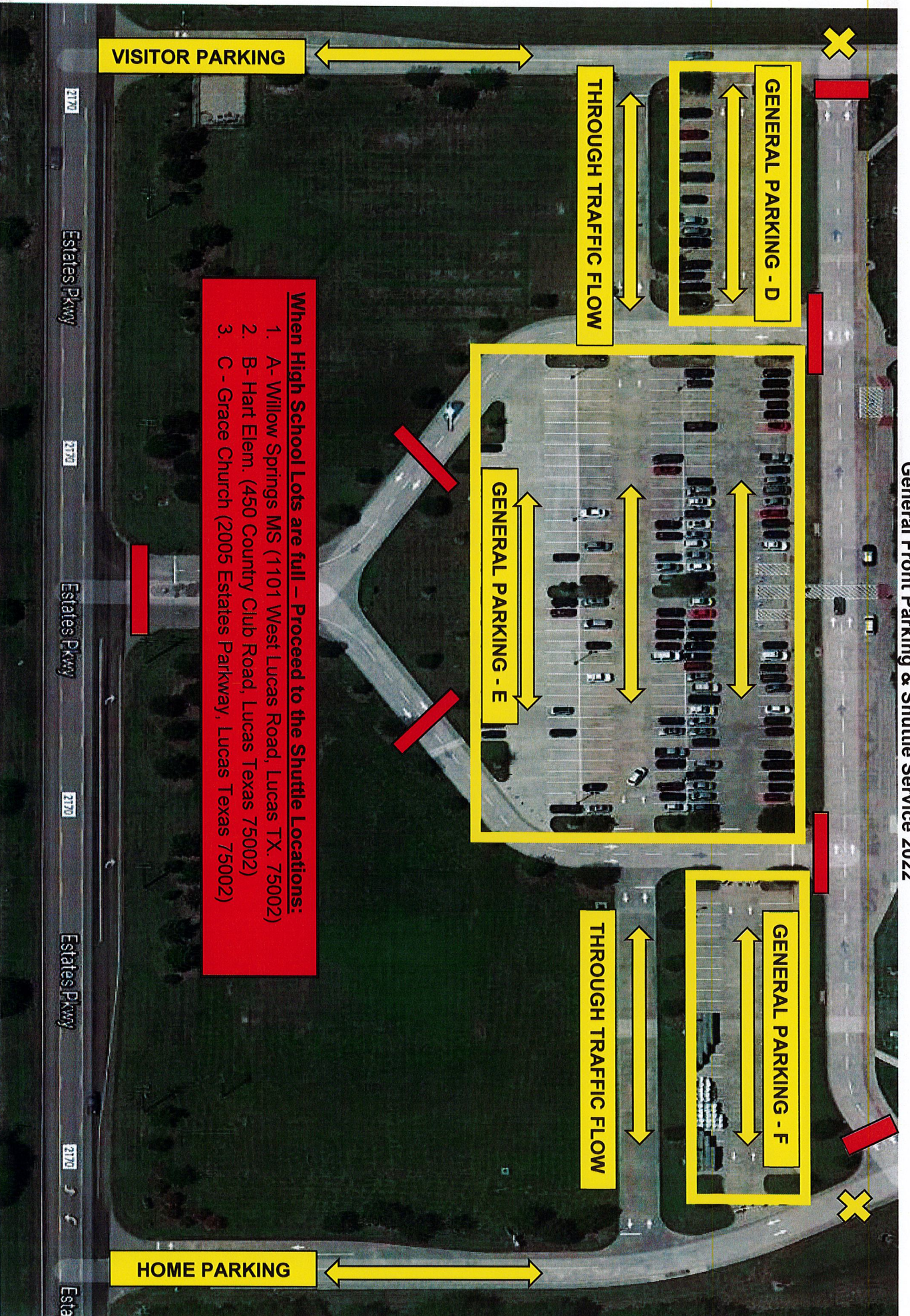
Leopard VIP Parking

 Gridiron Tailgate

Gridiron Club Pre-Game Tailgate Area

When High School Lots are full – Proceed to the Shuttle Locations:

- A- Willow Springs MS (1101 West Lucas Road, Lucas TX. 75002)
- B- Hart Elem. (450 Country Club Road, Lucas Texas 75002)
- C - Grace Church (2005 Estates Parkway, Lucas Texas 75002)



General Front Parking & Shuttle Service 2022

General Parking (Front of High School D-E-F) – There are three General Parking Lots in Front of Lovejoy High School (D-E-F).

These spaces are on a first come first serve basis. The **Home** patrons will need to enter and exit from the **EAST**, while our

VISITING patrons will enter and exit from the **WEST** entrance/exit (refer to map for traffic flow).

Opponent Bus Parking (East Parking) – The Opponent Buses (FB Team) will park in the East Parking Lot located east of Lovejoy High School. After Opponent Groups depart their buses at the drop off location, the team buses will be directed to the east parking area and assisted with parking their buses (**Sherria Bracey** – Head Parking Attendant). **Welcome to Lovejoy.**

Through Traffic Flow – These areas (**Lots D-E-F**) are used for patrons to drive through while looking for open spaces or to leave the campus and continue to **Shuttle Service at Willow Springs Middle School (1101 West Lucas Road Lucas, Texas 75002)**

SHUTTLE PARKING: When the Lovejoy High School General Parking Lots become full, all patrons will drive to our off-site shuttle service. **First Shuttle Lot A** – **Willow Springs Middle School (1101 West Lucas Road, Lucas Texas 75002)**. This lot will be the **first** lot to offer shuttle service to the stadium. The shuttle will pick you up from this location and return you to your vehicle at the conclusion of the game. **Second Shuttle Lot B** – **Hart Elementary School (450 Country Club Road, Lucas Texas 75002)**. This lot will be the **second** lot to offer shuttle service to the stadium. The shuttle will pick you up from this location and return you to your vehicle at the conclusion of the game. **Third Shuttle Lot C** – **Grace Church (2005 Estates Parkway, Lucas Texas 75002)**. This lot will be the **third** lot to offer shuttle service to the stadium. The shuttle will pick you up from this location and return you to your vehicle at the conclusion of the game.

There will be **LOT FULL SIGNS** at the entrance to the high school when **GENERAL PARKING** becomes full. **PLEASE CONTACT THE LOVEJOY ATHLETIC DEPARTMENT (469-742-8068) FOR MORE INFORMATION REGARDING THE LOVEJOY SHUTTLE SERVICE.**

X These Parking Attendants will assist all patrons with proper traffic flow and communicate when parking lots are full and direct patrons to the shuttle service.

Opponent Bus Entrance, Drop Off and Parking 2022

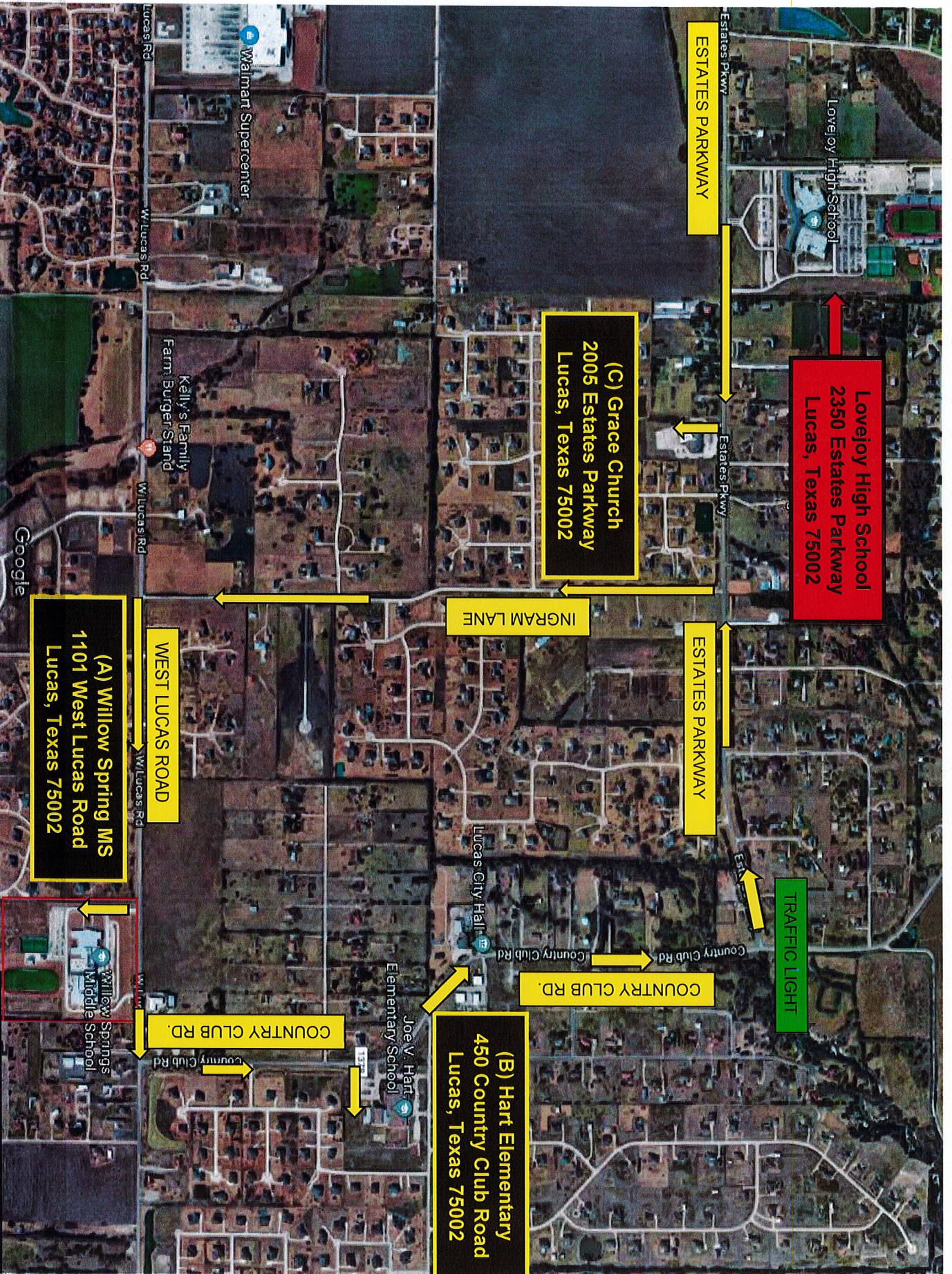


Opponent Bus Entrance, Drop Off and Parking 2022

- The Opponents Buses will enter the East driveway of Lovejoy High School and proceed to the back of Lovejoy High School. Buses will travel down the east driveway to the stadium drop off locations. The team, band, cheer, and drill team will unload on the driveway west of the tennis courts (X). The Band Trailer / Box Truck will park in the opponent bus parking in the East Parking Area next to the LHS Gymnasium. The Varsity Football Team Buses will unload on the sidewalk (X) in front of the Visitor ticket Booth on the east side of the stadium entrance. The team buses will park in the east parking lot of Lovejoy High School Gymnasium & STEM Lab. Stadium Manager Eddie Bell will meet team buses at their drop-off locations and assist your group to their designated areas in the stadium (Team Locker Rooms / Band Stadium Sections / Sideline Equipment). Parking Attendant will assist your teams from departing their buses and then direct your buses to the designated bus parking lot located to the east of the high school building. At the conclusion of the game, all buses will exit from the east driveway through the north end bus parking exit. Patrol will direct you out from Lovejoy High School. We hope your time here at Lovejoy High School is a positive experience and have safe travels to and from Lovejoy High School.

- X Parking Attendants will assist buses with their parking locations (East Gymnasium Parking Lot).

Shuttle Service Off-Site Parking 2022



Shuttle Service Off-Site Parking 2022

The Lovejoy ISD offers shuttle service to and from Leopard Stadium for each Home Football contest. The shuttle service will begin at 5:30 PM. The stadium gates open at 5:30 PM Patrons will drive their vehicle to Lot A- Willow Springs Middle School (1101 West Lucas Road, Lucas Texas 75002) and park at this location. To get to WSMS depart Lovejoy High School and turn east unto Estates Parkway. Continue for about ¾ of a mile and turn right onto Ingram Lane. Head South for about a mile on Ingram Lane until you get to West Lucas Road. Turn Left unto West Lucas Road and drive east for about a mile till you see Willow Springs Middle School on your right. The Lovejoy Shuttle Bus will pick up our Football patrons in the back lot under the walkway awning. When the backlot becomes full, patrons will park in the front and load shuttles from the front awnings. The Lovejoy Shuttle will drop off patrons at the main ticket booths located on the south end of the Stadium. When patrons are ready to be taken back to their vehicle, the shuttle bus will load the patrons from the same drop off point at the stadium. The shuttle will return patrons to their car for their convenience. The shuttle service runs throughout the entire football game until all patrons are returned to their vehicles.

If Willow Springs Middle School lot fills, patrons will proceed to Lot B – Hart Elementary 450 Country Club Road Lucas, Texas 75002. Turn right out of Willow Springs Middle School onto West Lucas Road. Drive to the stop light and turn left onto Country Club Road. Carrie L. Lovejoy will be on your left. Patrons will follow the same parking procedures from Willow Springs Middle School. Patrons will load / depart the shuttle buses from the awnings on the South side of Carrie L. Lovejoy.

If Hart Elementary Lot fills, then patrons will proceed to Lot C Grace Church parking lot (2005 Estates Parkway, Allen TX 75002). Turn right out of Hart parking lot onto Country Club Road. Continue on Country Club until you get to the stop light on Estates Parkway. Turn left and head west on Estates Parkway for about two miles and then turn left into Grace Church Front Parking Lot. Patrons will park their vehicles in the front parking lot and load the shuttle bus from the front area of the church. The shuttle bus will return all patrons to their vehicles at the conclusion of the game.

**** Lovejoy High School has limited Stadium Parking and we encourage our FOOTBALL patrons in using the LISD Varsity Football Shuttle Service for all Varsity Home Contest. If you have any questions or concerns please contact the Lovejoy Athletic Department (469-742-8068). ****