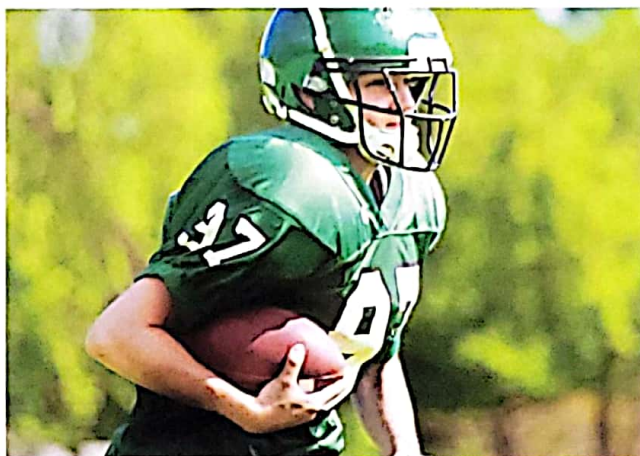


# Don't let sport injuries dampen the thrill of victory



## Trust your CHRISTUS Santa Rosa Orthopaedics & Sports Medicine home team

Injuries can happen to even the toughest athletes. When your sport gets you down, it's good to know that there is a team just waiting to take to the field with a FREE evaluation. CHRISTUS Santa Rosa Orthopaedics & Sports Medicine is staffed by specialists in orthopaedics, primary care, and pediatrics. Our team is dedicated to getting young athletes back on their feet and back in the game.

CHRISTUS Santa Rosa Orthopaedics & Sports  
Medicine  
423 Treeline Park, Suite 350, 3rd Floor,  
San Antonio | TX 78209

**210.705.5060 | [christussantarosa.org/sports](http://christussantarosa.org/sports)**

Complimentary parking is available.

## Open for the 2021-2022 Sports Season

Registration: 5:45-9:00 A.M.

Exams: Begin at 6:00 A.M.

## Sports Medicine Clinic Saturday Schedule

August 2021 • 7<sup>th</sup>, 14<sup>th</sup>, 21<sup>st</sup>, 28<sup>th</sup>

September 2021 • 4<sup>th</sup>, 11<sup>th</sup>, 18<sup>th</sup>, 25<sup>th</sup>

October 2021 • 2<sup>nd</sup>, 9<sup>th</sup>, 16<sup>th</sup>, 23<sup>th</sup>, 30<sup>th</sup>

November 2021 • 6<sup>th</sup>, 13<sup>th</sup>, 20<sup>th</sup>

December 2021 • 4<sup>th</sup>, 11<sup>th</sup>, 18<sup>th</sup>

January 2022 • 8<sup>th</sup>, 22<sup>nd</sup>

February 2022 • 5<sup>th</sup>, 19<sup>th</sup>

March 2022 • 5<sup>th</sup>, 12<sup>th</sup>, 26<sup>th</sup>

April 2022 • 9<sup>th</sup>, 23<sup>rd</sup>

May 2022 • 7<sup>th</sup>, 21<sup>st</sup>



CHRISTUS. SANTA ROSA  
Orthopaedics & Sports Medicine



# What each athlete should know or have before coming to the CHRISTUS Santa Rosa Orthopaedics & Sports Medicine Clinic

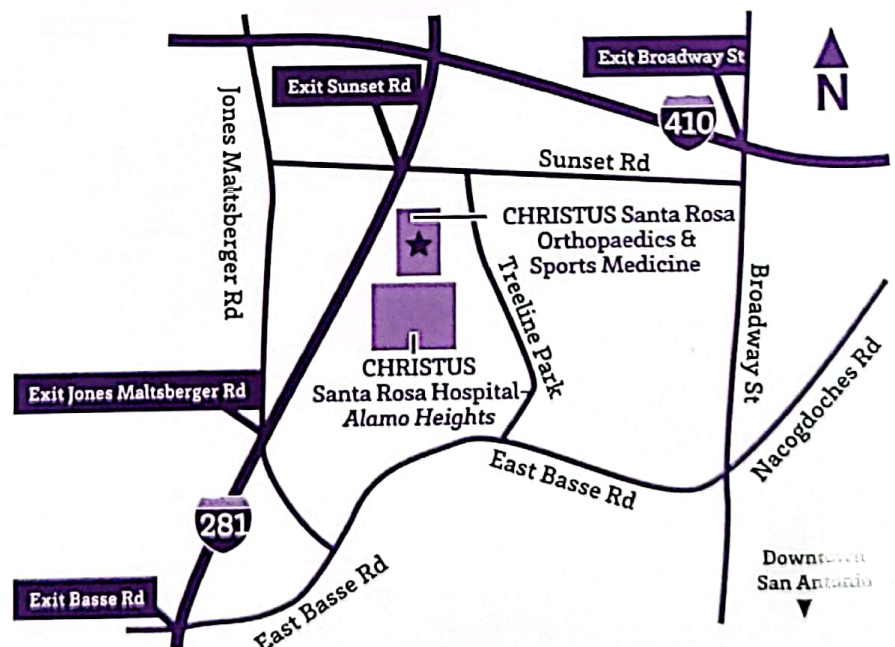
## WHAT THE ATHLETE SHOULD KNOW:

- Name
- Address
- Date of birth
- Student/athlete social security number
- Home phone number
- Parent's/guardian's name, employer, and work phone number
- Name of school you attend
- Athletic trainer's or coach's name

## WHAT EACH ATHLETE SHOULD BRING:

- A parent, guardian, athletic trainer, or coach
- Proof of insurance whether it be school insurance or personal insurance
  - » If you have school insurance, you must have a form signed by one of your parents/guardians/a completed student claim form from your school
- If any X-rays or MRI were done before your visit to the Clinic, be sure to bring a copy of the films with the report
- A completed registration packet (Pick this up from your trainer or coach. This will streamline your visit once you arrive.)

CHRISTUS Santa Rosa Orthopaedics & Sports Medicine is staffed by specialists in orthopaedics, primary care, and pediatrics. Visit [ChristusSantaRosa.org/Sports](http://ChristusSantaRosa.org/Sports) or call 210.705.5060 for more information today.



423 Treeline Park | Suite 350 | 3rd Floor | San Antonio | TX 78209

CHRISTUS Santa Rosa Orthopaedics & Sports Medicine complies with applicable Federal civil rights law and does not discriminate on the basis of race, color, national origin, age, disability, or sex. ATENCIÓN: Si habla español, tiene a su disposición servicios gratuitos de asistencia lingüística. CHÚ Ý: Nếu bạn nói Tiếng Việt, có các dịch vụ hỗ trợ ngôn ngữ miễn phí dành cho bạn.